



PREMSIL
PREMIUM SILICONE

PREMSIL RG-250
.....
EN45545 R22/R23 SILICONE SPONGE



SILICONE SPONGE SOLUTIONS FOR RAIL & MASS TRANSIT



PREMSIL
PREMIUM SILICONE

What is it?

PremSil RG-250 is our closed cell silicone sponge designed specifically for the rail & mass transport industries. PSS RG-250 is EN45545-2 R22/R23 compliant and maintains all benefits of silicone sponge, including extreme temperature stability, making it a fantastic choice of material for a range of applications.

EN45545

The rail and mass transit industry is growing rapidly with an increasing demand for products that provide sealing and dampening solutions. EN45545 requirements set the standard for passenger safety and protection from fire. These strict regulations demand materials meet specific criteria for both internal and external applications. PREMSIL RG-250 is manufactured in accordance to EN45545 standards R22/R23 for interior & exterior seals & gaskets.

Why PREMSIL?

It's extremely important that engineers and designers are choosing the right materials for their applications. PREMSIL RG-250 is a lightweight, medium density silicone sponge material offering extreme temperature resistance, low smoke/toxicity, and flame resistance. Coupled with a very low compression set and great durability, it is a first class solution for plenty of industry applications. Silicone sponge's inherent longevity also means maintenance and downtime costs are reduced when compared with other materials.

PRODUCTS:

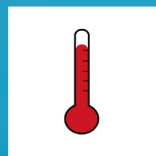
- Sections
- Cord
- Tubes
- Single Sheets
- Gaskets
- O-rings

Self Adhesive backing optional. Black/ dark grey colour.

FEATURES & BENEFITS



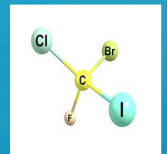
Flame Retardant



Extreme Temp Resistance
-50°C to +200°C



Closed cell structure & smooth outer skin



Halogen Free



Excellent resistance to UV, Ozone and Weathering.



Excellent tear resistance



Low Smoke



Low water, moisture & dust ingress.



Lightweight material



Low Toxicity



Low compression set



Full in-house control for a consistent product

Applications:

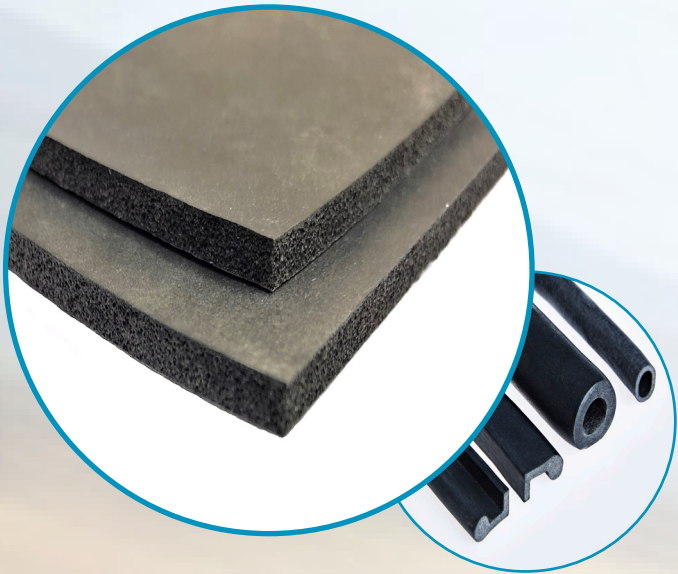
Interior/Exterior Gaskets & Seals

- Interior door seals
- Lighting gaskets
- HVAC seals
- Smoke seals
- Gap fillers
- Enclosure seals
- Moisture & Dust seals
- Panel seals
- LCD Gaskets
- Exterior door seals
- Exterior Lighting seals
- Window seals

SILICONE SPONGE SOLUTIONS FOR RAIL & MASS TRANSIT



TECHNICAL DATA	VALUE	TEST
Appearance	Black/Grey	-
Density	250kg/m ³ (±60)	ASTM D 1056
Compression force deflection @ 25% strain	45 kPa	ASTM D 1056
Compression force deflection @ 40% strain	100 kPa	BSENISO 3386 Pt. 1, 2
Compression Set @ 100°C, 22 hrs	<5%	ASTM D 1056
Water Absorption	<5%	ASTM D 1056
LOI	31.5%	ISO 4589-2
Smoke Toxicity CIT _{NLP}	0.05	NF X 70-100
Smoke Density Ds(max)	89	ISO 5659-2
Temperature range	-50°C min +220°C max	-





PREMSIL
PREMIUM SILICONE

Got an enquiry or have a question? Get in touch with one of our team...

PREMIUM SILICONE SPONGE LTD.
UNIT 2 RIVERSIDE IND. ESTATE,
BRANCH ROAD,
LOWER DARWEN,
ENGLAND.
BB3 0PR.

T: +44 (0) 1254 660544
E: info@premiumsilicone.co.uk
W: www.premsil.co.uk